

# RTM 4002 X USER MANUAL



**SiS Sensoren Instrumente Systeme GmbH**  
**Mühlenkoppel 12**  
**D-24222 Schwentinental, Germany**

sensor housing

display window

battery housing



glass tube

magnetic switch activation area

# CONTENTS

1. Introduction.....	6
1.1 General Description.....	8
1.2 Packing List.....	9
2. Putting Into Operation .....	10
2.1 Insertion of Battery .....	10
2.2. Self Test .....	11
2.3 Enhanced Self Test and Instrument Data.....	12
3. Operational Instructions and Operation Modes .....	15
3.1 General Operational Instructions .....	15
3.2 Hold Mode .....	16
3.3 Continuous Mode .....	18
3.4 Sample Mode .....	20

3.4.1 Activation of the Sample Mode (Preparing for Sampling) .....	20
3.4.2 Sampling Values.....	22
3.5 Burst Mode .....	24
4. Low Battery Condition .....	26
5. Measuring Range .....	27
6. Cleaning and Handling .....	28
7. Transport and Storage .....	29
8. Service and Maintenance .....	30
8.1 Replacement of Wearing Parts .....	32
8.2 Replacement of Battery Contact.....	33
8.3 Replacement of Battery Contact Spring .....	33
9. Trouble Shooting.....	34
9.1 Ingress of Water Into the Battery Housing.....	34
9.2 Ingress of Sea Water Into the Main Housing.....	35

10. Calibration .....	35
Appendix A: Operational Modes Flowcharts.....	36
Appendix B: Technical Specification .....	42
Appendix C: Error Codes and Messages .....	44
Appendix D: Spare Parts and Batteries.....	48
Appendix E: Warranty and Support.....	51

## 1. Introduction

The RTM 4002 X is a digital deep sea reversing thermometer with the outer dimensions of mercury instruments. It has the same positive features as classical unprotected reversing thermometers but without the disadvantages:

- Reading of values with maximum accuracy no longer needs optical magnification.
- The sample value is protected against inadvertent further reversing.
- The instrument is mercury free.
- The displayed value is not a single value but the mean of a series of sixteen measurements.
- There is no need to have two instruments in each reversing frame for value reliability analysis, because the standard deviation of the measured series is evaluated.
- In burst mode all sixteen measurements can be displayed.



## 1.1 General Description

The RTM 4002 X is a reversing thermometer with a measuring range of  $-2\text{ }^{\circ}\text{C}$  up to  $+40\text{ }^{\circ}\text{C}$ . The housing is made of a glass tube, closed at the ends by titanium stoppers. One stopper contains the temperature sensor and the other is the battery compartment.

The instrument is operated by a magnetic programming switch for stepping through the operational modes 'HOLD', 'CONT', 'SAMP' and 'BURST'.

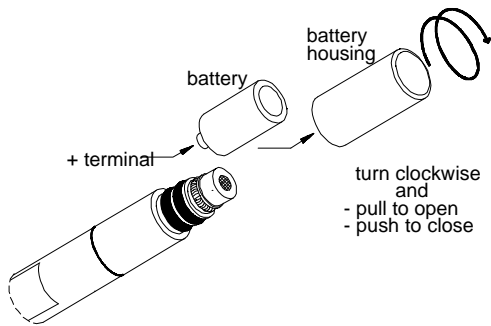
A battery test indicates the need for battery replacement.

## 1.2 Packing List

- 1 RTM 4002 X thermometer
- 1 Magnetic bar
- 1 User manual
- 1 Factory calibration certificate
- 1 Battery
- 1 Spare parts kit with
  - 2 O-rings
  - 1 locking spring

## 2. Putting Into Operation

### 2.1 Insertion of Battery



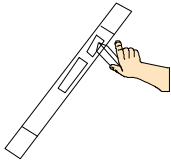
The battery is placed in a separate compartment outside the main pressure housing at the opposite end to the sensor head. The main housing does not need to be opened to replace the battery. To open the battery compartment, turn it clockwise whilst pulling it apart from the main housing. Put battery into its housing with negative (-) terminal down towards the contact spring. Refit battery compartment to main housing turning it clockwise as it is pushed home. The housing is sealed by two O-rings.

## 2.2. Self Test



After the insertion of a battery, the instrument will perform a self test. This is indicated by displaying 'CHECK' for a period of about five seconds. If an error occurred, you will see the message 'Exxxx' on the display where 'xxxx' is an error code (see appendix C, Error Codes and Messages).

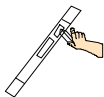
## 2.3 Enhanced Self Test and Instrument Data



The enhanced self test mode can be activated by operating the magnetic switch during the five second start up delay whilst the display shows 'CHECK'.



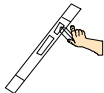
At first all elements of the display are activated.



5.20 13 °C

Another activation of the magnetic switch will display the serial number of the instrument.

The serial number is 2013.



[03.97 °C

Another activation of the magnetic switch will display the calibration month and year.

Last calibration date is March 1997.

Exit enhanced self test by activating the magnetic switch once more. The instrument will switch to the hold mode. Please note the instrument **will not** automatically switch to power down mode during enhanced self test. **Always exit** enhanced self test to ensure longer battery life.

### 3. Operational Instructions and Operation Modes

#### 3.1 General Operational Instructions

The instrument has two operational elements:

- A magnetic switch behind the dotted area. The switch is activated by passing over that area with the magnetic bar provided. Please note, there must be a delay time of at least one second between two consecutive activations of the magnetic switch.
- An internal mercury free tilt switch that is activated by reversing the instrument (sensor head is pointing upwards) and de-activated when the sensor head is pointing downwards.

### 3.2 Hold Mode

Before activating the instrument with the magnetic switch, ensure that the sensor is pointing upwards to avoid clearing the sample values by switching inadvertently to the sample mode. The source of the displayed value (from continuous or sample mode) is indicated by 'CONT' or 'SAMP', respectively.



In the hold mode the results from the last sampling are displayed. The source of the values is indicated by 'CONT' or 'SAMP'. At first the average of the sixteen sample values is displayed for five seconds.



Next the standard deviation, calculated from the sixteen values, is displayed for two seconds. The standard deviation of the single measurements is an indicator of the stability and accuracy of the sample values. The standard deviation for the mean value is one quarter of the indicated value.

Before power down, the instrument will display the average and deviation once again for five and two seconds respectively and finally the average for five seconds.

### 3.3 Continuous Mode

To enter the continuous mode, the magnetic switch must be activated when in the hold mode with the sensor head pointing downwards. If the sensor head is pointing upwards, the instrument is locked to prevent overwriting of the last sample result.



Activation of the continuous mode is indicated by the CONT indicator in the display. The digit fields in the display will be blank for a period of 1 second.

CONT 4.58 18 °C

The instrument then begins to measure and display temperature 67 times (about 55 seconds). The last sixteen values are stored and the average and the standard deviation for these sixteen values are calculated before power down.

## 3.4 Sample Mode

### 3.4.1 Activation of the Sample Mode (Preparing for Sampling)

To enter the sample mode, the magnetic switch must be activated when in the continuous mode. After entering the continuous mode, there must be a delay of at least 4 seconds before entering the sample mode.



Activation of the sample mode is indicated by the SAMP indicator in the display. The digit fields in the display will be blank for a period of 1 second.



The instrument then begins to measure and display temperature while the magnetic switch is still activated. If the magnetic switch is no longer active, or fifteen seconds have passed, the instrument will power down in sample standby mode. Now the instrument is prepared for taking samples. If the magnetic switch is activated during sample standby mode, the instrument will activate the sample mode again.

### 3.4.2 Sampling Values



Sampling will start when the instrument is reversed (sensor head is pointing upwards). The instrument displays the 'SAMP' indicator with blank digit fields for one second.

After three measurements for about 2.5 seconds to ensure that the measuring values are stable sixteen measurements are taken in fifteen seconds before power down. The instrument must be in reversed direction during the complete sample time. If the instrument is turned back to the non reversing position during the sampling of values for a period of one second, the instrument will immediately power down in sample standby mode.



### 3.5 Burst Mode

The burst mode will display all sixteen values from sampling or the last sixteen values from continuous mode.

To activate the burst mode, the instrument must be in power down mode and activated by the magnetic switch **without** removing the magnetic bar from the activation area. After five seconds in the hold mode, the instrument will switch to the burst mode, which is indicated by 'BUR'. The source of the burst values (from continuous or sample mode) is indicated by 'CONT' or 'SAMP', respectively.



To display the next burst value, the magnetic switch must be activated. If the magnetic bar is still over the activation area after two seconds, the next burst value will be automatically displayed. This automatic mode can be entered or left at any time during the burst mode. If there is no activity from the magnetic switch for fifteen seconds, the instrument will switch to the power down mode.

After the display of the last burst value, the hold mode is activated again. It is not possible to switch back to burst mode now. To enter the burst mode again, the instrument must be in power down mode.

#### 4. Low Battery Condition



The blinking BAT indicator is displayed if the battery is nearly discharged. The instrument is able to do about 10 or more measurements after the first display of the BAT indicator.

If the battery is not able to power the instrument for measurements, it will display the BAT indicator and the message 'LO'. The last results may be still read out in hold or burst mode.

The battery test is only executed during sample and continuous modes or self test. In hold or burst mode the battery condition from the last sample mode or self test is displayed.

## 5. Measuring Range

CONT **UF** °C

CONT **OF** °C

The instrument is designed and calibrated for the specified temperature range of -2°C to +40°C. If the measuring temperature is out of range, the instrument will display the underflow indicator 'UF' or the overflow indicator 'OF'.

## 6. Cleaning and Handling

After using the instrument in salt water, it should be rinsed with fresh water. The sensor head especially, should be cleaned.

Although the instrument may be used at high pressure, it is sensitive to mechanical stress. So please handle the instrument with care. Take special care not to subject the housing to any leverage when inserting it into or removing it from, the reversing frame.

## 7. Transport and Storage

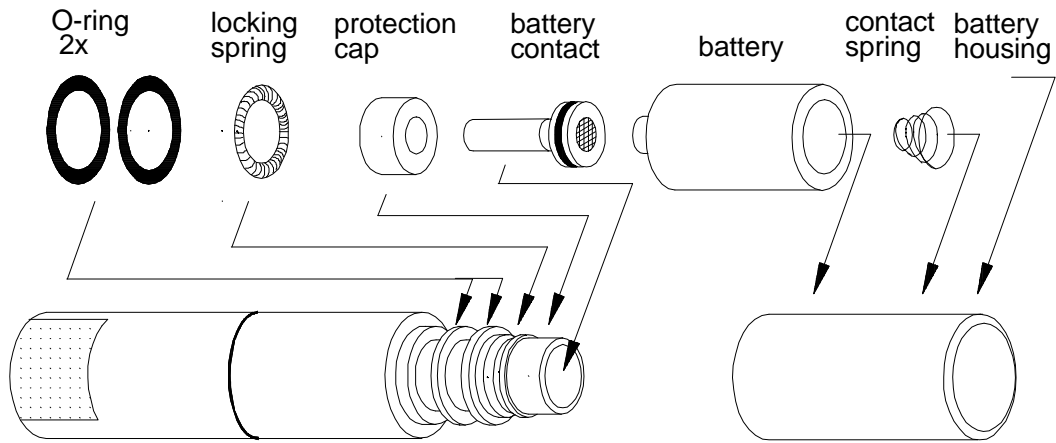
During transportation and storage the instrument should be in power down mode from hold mode or the battery should be removed. If the battery is not removed, the magnetic bar should be placed away from the activation area to avoid discharging the battery. **Please note, the last sampling result is cleared when the battery is removed.**

The instrument should not be exposed to temperatures above 65 °C. Higher temperatures may damage the display. Please comply also with the requirements for used batteries. Most Lithium batteries should not be exposed to temperatures above 70 °C.

## 8. Service and Maintenance

**NOTE: The replacement of the wearing parts, described below, should only be done by qualified technical personnel. Inexpert handling can cause serious damage. Do not open the instrument housing. There are no serviceable parts inside. Opening the housing will invalidate the calibration and render the warranty void.**

For a list of available spare parts and tools see appendix D.



## 8.1 Replacement of Wearing Parts

Remove the locking spring and the O-rings with a small screw driver. **Be very careful not to scratch the grooves.** Then clean the grooves with a dry, lint free cleaning cloth and check the grooves for marks. If there are any, replacement of the complete instrument housing is necessary. Grease the O-rings lightly with silicon paste. There should only be a thin film on the rings. Move the first O-ring over the insertion tool and place the ring in the rear groove. Then insert the other O-ring into the next groove. Finally push the locking spring into the front groove.

## 8.2 Replacement of Battery Contact

Begin by removing the reverse battery protection cap using a small screw driver to lever it out. Then screw the removal and insertion tool into the old battery contact and pull it out. Use the tool again to insert the new contact then reassemble the protection cap.

## 8.3 Replacement of Battery Contact Spring

To remove the old spring, use small pliers to pull the spring out of the housing. Place the new spring with the wide side first into the coned end of the outer part of the insertion tool. Use the inner part of the tool with the coned end to press the spring into the outer part. Place the tool on a plane surface and press the spring nearly down to the end of the tool. If the spring is placed straight inside, push the tool into the battery housing and press the spring down until it snaps in.

## 9. Trouble Shooting

### 9.1 Ingress of Water Into the Battery Housing

After ingress of water into the battery housing, replacement of the battery, the O-rings and the locking spring is necessary. If the battery contacts are corroded, the battery contact and the battery contact spring must be replaced too.

To replace these parts, see chapter 8, Service and Maintenance.

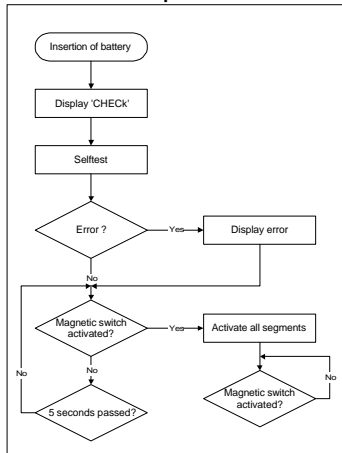
## 9.2 Ingress of Sea Water Into the Main Housing

After ingress of sea water into the main housing, the instrument should be rinsed with fresh water. This will minimise corrosion of the electronic parts by sea water.

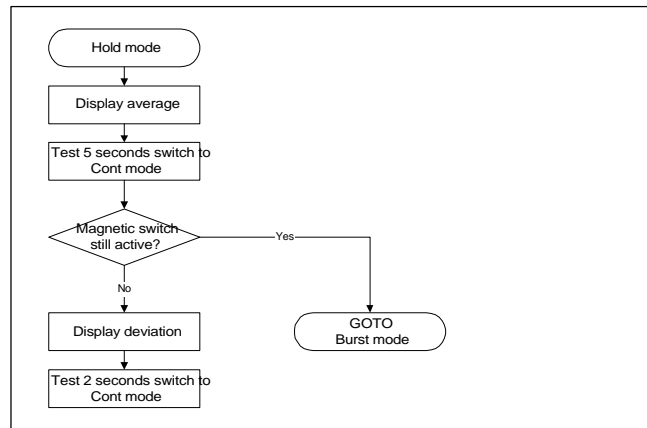
## 10. Calibration

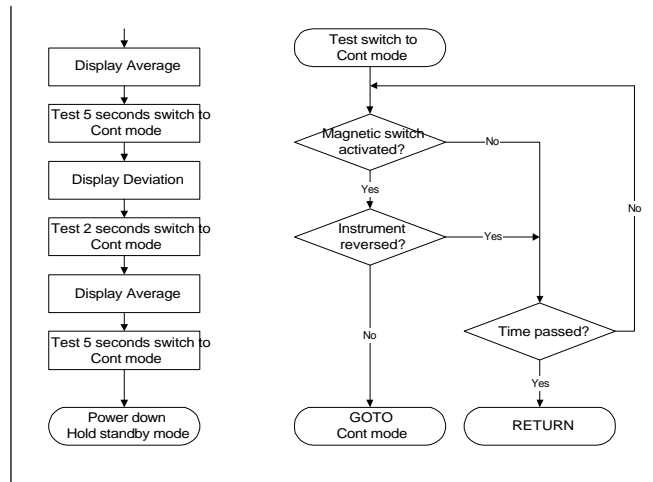
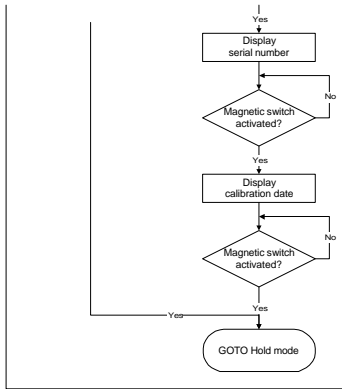
The instrument is factory calibrated when delivered. Recalibration can only be carried out by SiS. For highest accuracy recalibration is recommended annually.

## A1 Power Up and Self Test Flowchart

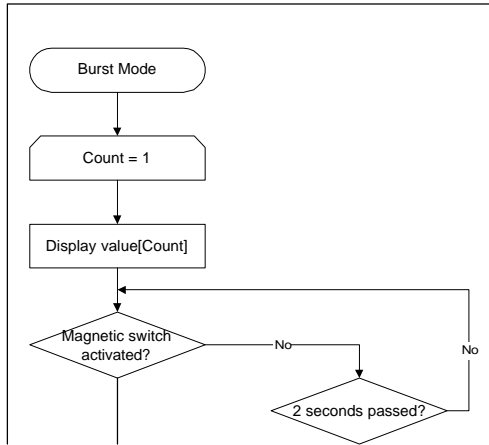


## A2 Hold Mode Flowchart

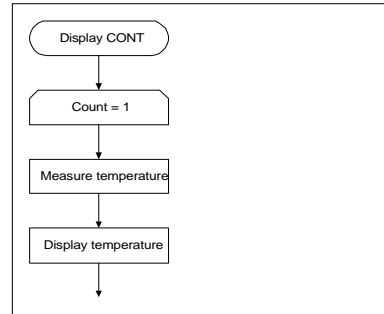


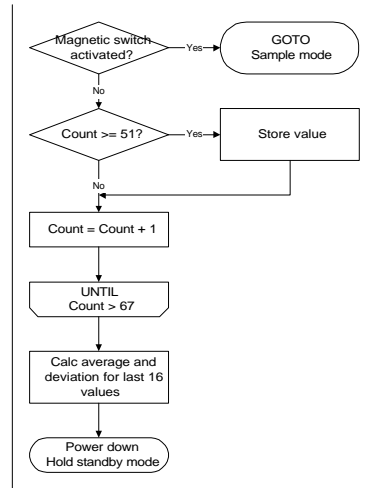
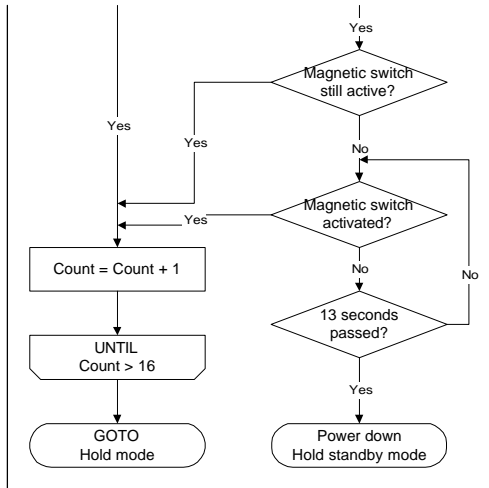


### A3 Burst Mode Flowchart

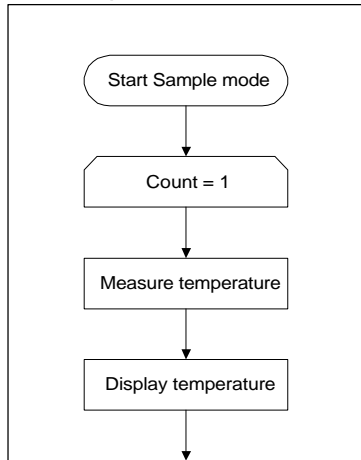


### A4 Continuous Mode Flowchart

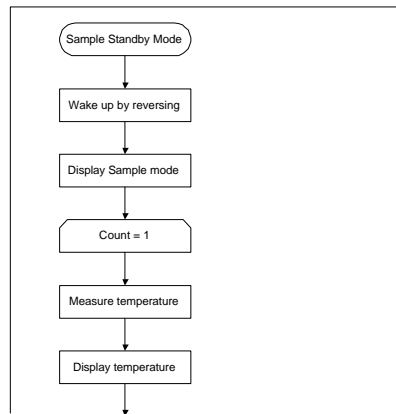


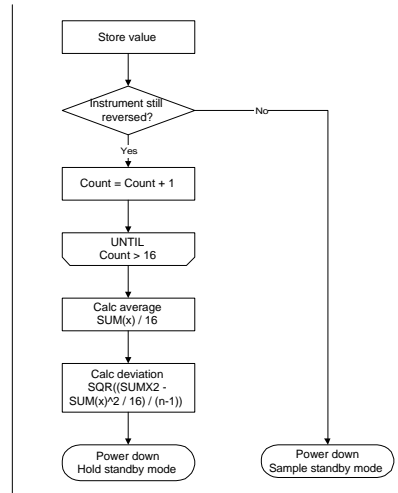
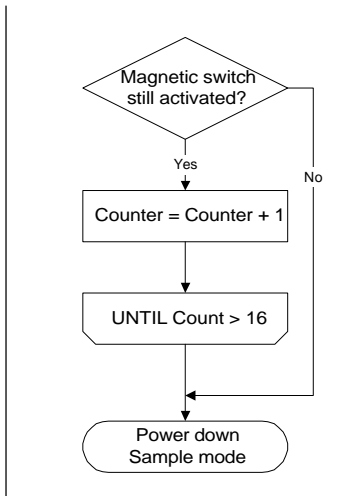


### A5 Sample Activation Flowchart



### A6 Sample Mode Flowchart





## Appendix B: Technical Specification

Measuring range	-2.0 - +40.0 °C
Resolution	0.0001 °C      from -2.0000 - +9.9999°C 0.001 °C      from +10.000 - +40.000 °C
Resolution for deviation	0.0001 °C
Accuracy	±0.003 °C
Stability	±0.00025 °C / month
Pressure range	10000 dbar
Sampling frequency	1.25 Hz (0.8 sec / sample)
Burst sampling size	16 samples
Operating temperature	-10 - +60 °C
Storage temperature	-20 - +65 °C

Outer dimensions	327 mm length, 20 mm diameter
Weight	170 g
Operating voltage	2.7 - 5.5 V
Power down current	12.3 $\mu$ A typ., 40 $\mu$ A max.
Power down current waiting for sampling	15.7 $\mu$ A typ., 44 $\mu$ A max.
Hold/Burst mode current	2.1 mA typ., 4.0 mA max.
Sample mode current	7.2 mA typ., 13.3 mA max.
Battery specification	LithiumThionyl Chloride, 3.5 - 3.7 V $\frac{1}{2}$ AA (ANSI), $\frac{1}{2}$ R6 (IEC)
Battery life @ 0.75 Ah battery capacity	2541 days typ., 786 days min in power down mode 1942 days typ., 665 days min. (1 usage per day) 622 days typ., 280 days min. (10 usages per day)

## Appendix C: Error Codes and Messages

If there are errors during the self test, they will be displayed logical OR combined. An internal bus error E0402 while reading from EEPROM will be displayed as E0413 = E0402 + E0411, because the instrument could not read the calibration data.

Codes E0308, E0310 and E0318

Improper reset condition. Check the battery contacts and clean or replace them as necessary.

Codes E0402, E0404, E0406 and E0407

Internal bus error during EEPROM access. Please contact SiS.

Code E0410

EEPROM checksum error. Please contact SiS.

Codes E0411 and E1411

Calibration data lost. Please contact SiS.

Codes E0808, E1808, E0809 and E1809

Time out AD converter. Please contact SiS.

Codes E0820, E1820, E0821 and E1821

Out of range during self test (E0820 is overflow and E0821 is underflow). Ignore this error if the ambient temperature is outside the specified range.

Message CHECK

Self test is running.

Message OF

Measuring out of range (overflow).

Message UF

Measuring out of range (underflow).

Message CAL

Calibration mode active. Please contact SiS.

Message <sub>BAT</sub> LO

Battery discharged. Replace battery.

## Appendix D: Spare Parts and Batteries

Available spare parts and tools from SiS:

- Batteries
- Magnetic bar
- Wearing parts kit (2 O-rings, locking spring)
- Insertion tool for O-rings
- Battery contact spring
- Insertion tool for battery contact spring
- Reverse battery protection cap
- Battery contact (with mounted O-ring)
- Removal and insertion tool for battery contact
- Battery housing (with mounted battery contact spring)

- Silicon paste
- Battery housing kit with:
  - battery housing with mounted battery contact spring
  - wearing parts kit
  - battery contact with mounted O-ring
  - reverse battery protection cap
- Tool kit with:
  - Insertion tool for O-rings
  - Removal and insertion tool for battery contact
  - Insertion tool for battery contact spring

**CAUTION - Batteries might explode when abused. Do not short circuit, recharge, puncture, crush or expose to excessive heat. Replace batteries only by specified cells.**

Battery manufacturers:

<u>Manufacturer</u>	<u>Type</u>	<u>Voltage</u>	<u>Capacity</u>
Crompton Eternacell, GB	T04/8AA1	3.7 V	0.9 Ah
Saft, France	LS14250 (LS3)	3.5 V	0.95 Ah
Sonnenschein, Germany	SL-750/S	3.6 V	0.85 Ah

Please do not use normal Lithium batteries with nominal voltage of 3.0 V. The load voltage of these batteries is not high enough to guarantee correct functioning of the instrument.

## Appendix E: Warranty and Support

SiS warrants this instrument to the original purchaser to be free of defects in material or manufacturing for a period of two years. Liability is limited to repair or replacement of the defective part which will be done without charge if the instrument is returned to our factory prepaid. This warranty does not apply to instruments subjected to misuse or tampering. No responsibility or warranty for consequential damage is included in the sale of this instrument.

SiS - Sensoren Instrumente Systeme GmbH  
Mühlenskoppel 12, D-24222 Schwentinental, Germany  
Tel.: +49-431-79972-0  
Fax: +49-431-79972-11  
Email: [info@sis-germany.com](mailto:info@sis-germany.com)  
WWW: <http://www.sis-germany.com>

RTM 4002 X User's Manual  
Revision 1.06e - 02/08